

Restaurant At Inverewe Gardens

Home

Our Clients

Projects

News

The Company

Press

Awards

事務所简介

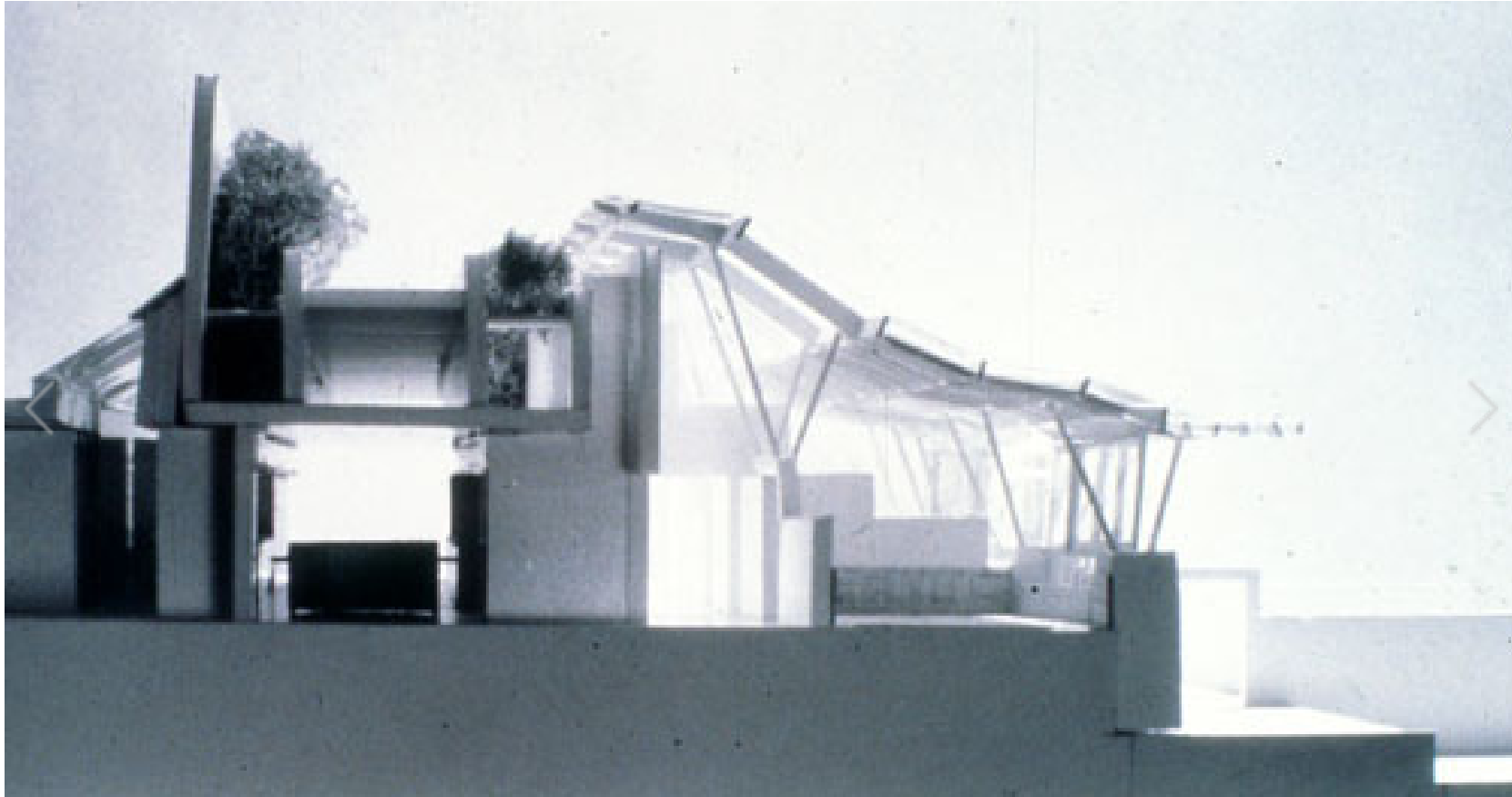
ريشارد ميرفي
أركيكتس

Contact Us

Search

>>

The Breakfast
Mission



Model

In the far north west of Scotland is a remarkable sub-tropical garden begun in the nineteenth century but now in the care of the National Trust for Scotland. We won an open competition for the design of a 200 seat restaurant on a site adjacent to Loch Ewe and also to two extensive existing walled gardens.

Our project divided the restaurant into four cafes of fifty seats each (the size of a bus party) and placed each in its own

walled garden. The servery took the form of an underground grotto and the continuation of the walled garden retaining wall became a thickened 'service wall' penetrated by openings between the grotto and the cafes, the entrance route ramping down on its landward side.

The cafes shelter under a glazed canopy supported by a forest of tree like steel supports, which also act as the portals from cafes to the terrace and from the circulation route to the cafes. Cafes can be progressively closed down or opened up to meet the variable demand of the tourist season. The glazed roof designed to be a continuation of the tradition of walled garden glass houses also acts as a solar chimney, with pre-warmed air mechanically re-circulated down to the cafes. The window wall is capable of completely folding away to transform the cafes into a deep veranda on sunny days.

The project was abandoned one week before construction was due to start on site and an alternative design by a local architect was built in the car park.

Other Details

Architects	Richard Murphy, Graeme Montgomery
Engineers	ARUP Scotland
M&E Engineers	ARUP Scotland
Quantity Surveyor	Souter and Jaffrey Inverness
Construction Cost	£900,000
Client	National Trust for Scotland

Press

February 2011	Competition Puts Character On The Drawing Board	
October 1997	Quad Squad	Riba Journal
24 March 1996	Room At The Top	Sunday Express Magazine
September 1995	Travellers Fare	Ideal Home
4 December 1992	Matter Of Trust At Inverewe	Herald
2 December 1992	Protests Mount Over Scottish Trust's Complete Collapse Of Courage	Architects Journal
29 November 1992	Economic Necessity Or A Collapse Of Courage	Scotland On Sunday
21 November 1992	Inverewe Gardens Under Threat	Glasgow Herald
1 May 1991	Perspective Section And Article	Architects' Journal
1 May 1991	At Last Rias Finds Inverewe Winners	Project Scotland

22 April 1991	Everything In The Garden Looks Sytlish For Floral Attraction	The Scotsman
11 March 1991	A Feast Of Grand Designs	The Scotsman

(027)

[Accessibility](#) | [Site Map](#) | [Privacy Statement](#) | [Subscribe to our Newsletter](#) | [Download page as PDF](#) © Richard Murphy Architects Ltd 1991-2018. Registered in Scotland No 255372.

Site by [Redstone Websites](#). Easy to Use Web Content Management.