



Broadhead Clough Nature Reserve

Historical interest

Stunning views

Wildflowers

Gorgeous upland woodland, typical of these acidic soils with oak, birch and holly, Broadhead Clough Nature

Reserve offers a spectacular Pennine landscape with a dramatic past. An invigorating climb through the tranquil mature woodland is rewarded by emerging on the top of the world, with stunning views back over the valley just climbed.

Location

Frost Hole Lane
Mytholmroyd
West Yorkshire
HX7 5RT

OS Map Reference

SE 000 250




Know before you go




Size


22 hectares

 **Entry fee**

Free

 **Parking information**


Vehicles are not allowed on the track leading to the reserve and should be parked on the roadside well before the bridge at Dauber.

 **Grazing animals**

Cattle graze the meadows on site part of the year.

 **Walking trails**

Public footpath through site up the valley to moor. Keep to the path to avoid bogs and marsh. Height gain 215m from road to top of nature reserve with some steep climbs and steps. The paths are slippery when wet.

 **Access**

Public footpath through Reserve. Not suitable for pushchairs or wheelchairs - very steep and uneven with many steps and narrow points.

 **Dogs**

On a lead

When to visit

Opening times

Open at all times

Best time to visit

September to October

Habitat

Heathland and moorland

Wet woodland

About



Seasonal highlights

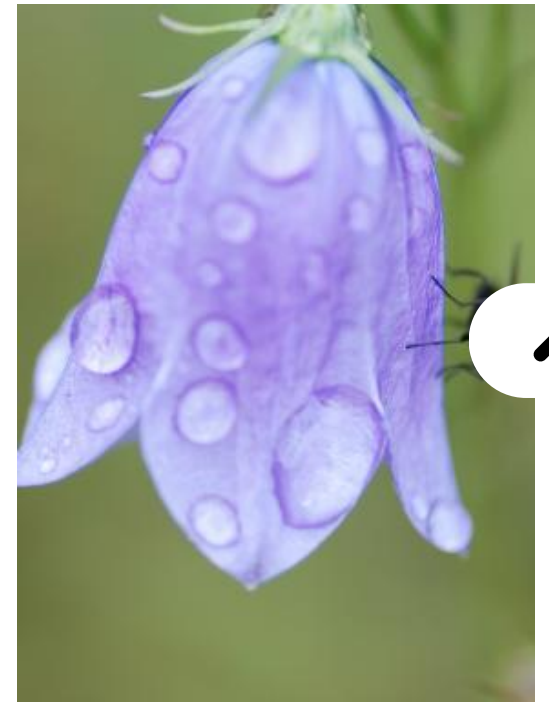


History



Directions





Nearby



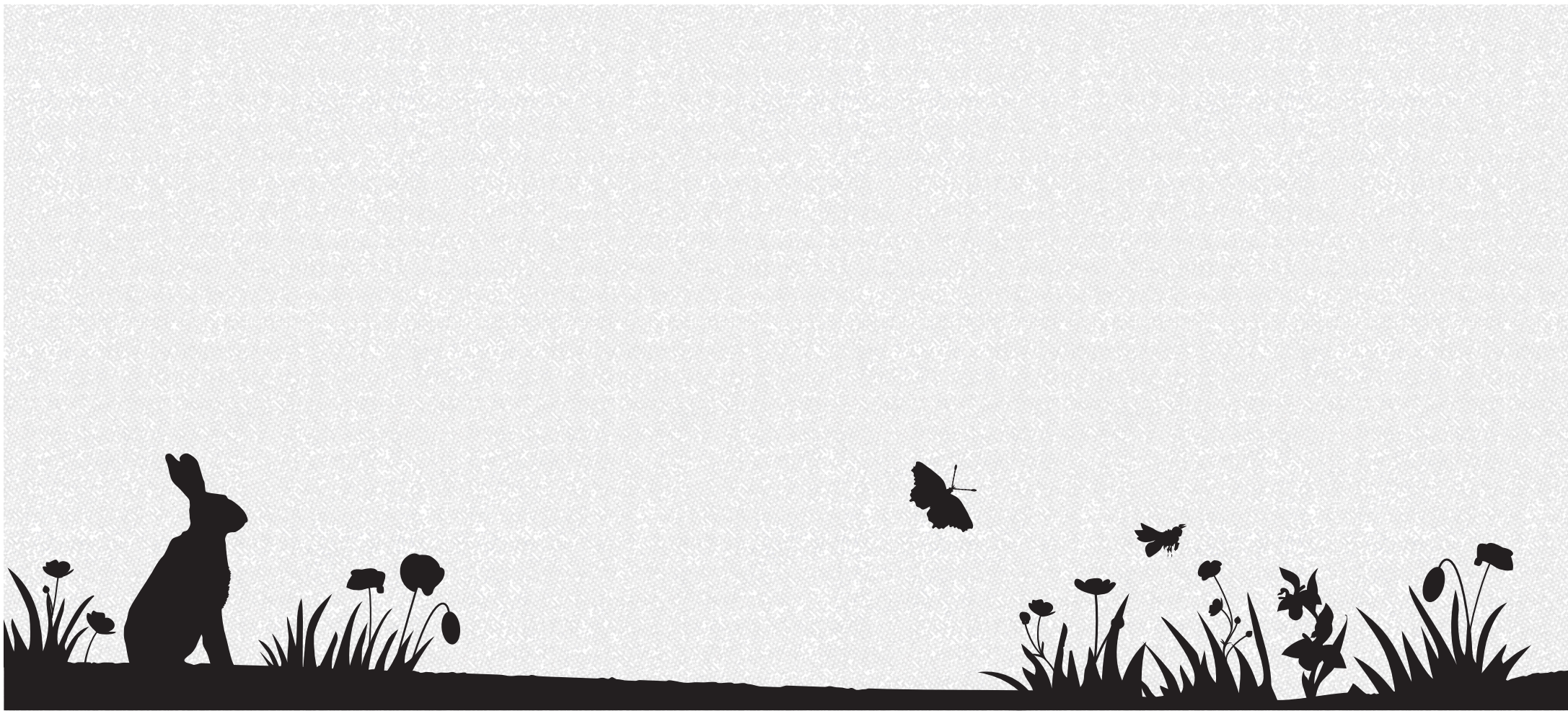
Upper Coldwell Reservoir (9 miles) >



Stirley Community Farm (12 miles) >



Upper Park Wood Nature Reserve
(12 miles) >



About Us

[What we do](#)

[Latest News](#)

Support Us

[Become a member](#)

[Donate](#)

Keep in touch

[Sign up to our e-newsletter](#)



Yorkshire Wildlife Trust is registered in England no. 409650 and is a registered charity no. 210807. Registered Office: 1 St George's Place, York, YO24 1GN

[Accessibility](#) | [Privacy Policy](#) | [Cookies Policy](#)