



Wheldrake Ings Nature Reserve

Getting away from it all

Overwintering birds

Spring migrant birds

Big skies, often full of whirling flocks of birds in winter, stretch out above you. The Derwent flows quietly by, reeds

rustle in the breeze and a mysterious 'plop' in the ditches might signal a pike, water vole or even otter. In fact, at times in the centre of Wheldrake Ings, it can be so peaceful and remote that you feel like the only person on earth.

Location

Ings Lane
York
North Yorkshire
YO19 6AX

OS Map Reference
SE690446




Know before you go




Size
157 hectares

 **Entry fee**

Free

 **Parking information**

Limited parking available at site and more at Natural England Bank Island, with a footpath link.

 **Grazing animals**

From late summer through to late autumn sheep and cattle are on site.

 **Walking trails**

Permissive footpaths. The paths are level, but muddy after wet weather. Keep to footpaths as there are areas of deep water. The ground is often soft and slippery.

 **Access**

Only accessible on foot along newly surfaced loose stone track. Kissing gate is not special access. This site is a natural floodplain and in winter floods from the river. Please ring Bank Island on 01904 449 589 or check the local twitter feed https://twitter.com/ldv_nnr?lang=en for accessibility information.

 **Dogs**

No dogs permitted



Facilities

Bird hides

When to visit

Opening times

Open at all times

Best time to visit

March to end June for breeding waders and meadows. November to end January thousands of migrating birds once flooded

Habitat

Lowland meadow and pasture

Wetlands

About

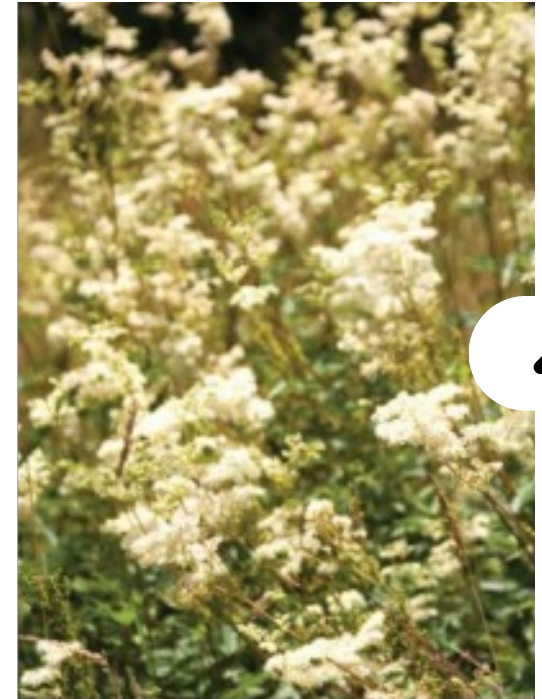
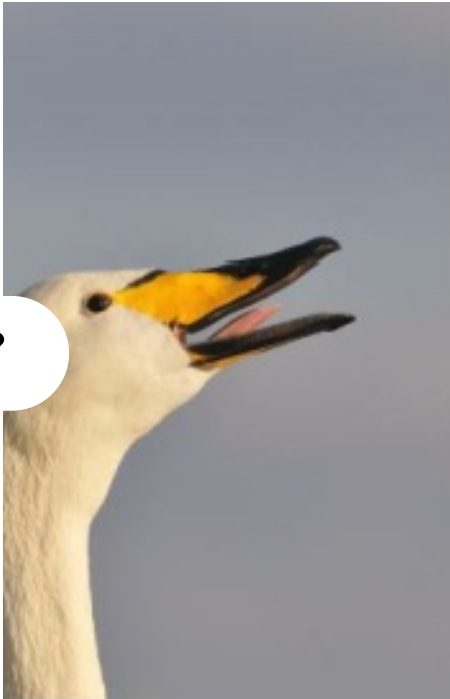


Seasonal highlights



Directions





Nearby



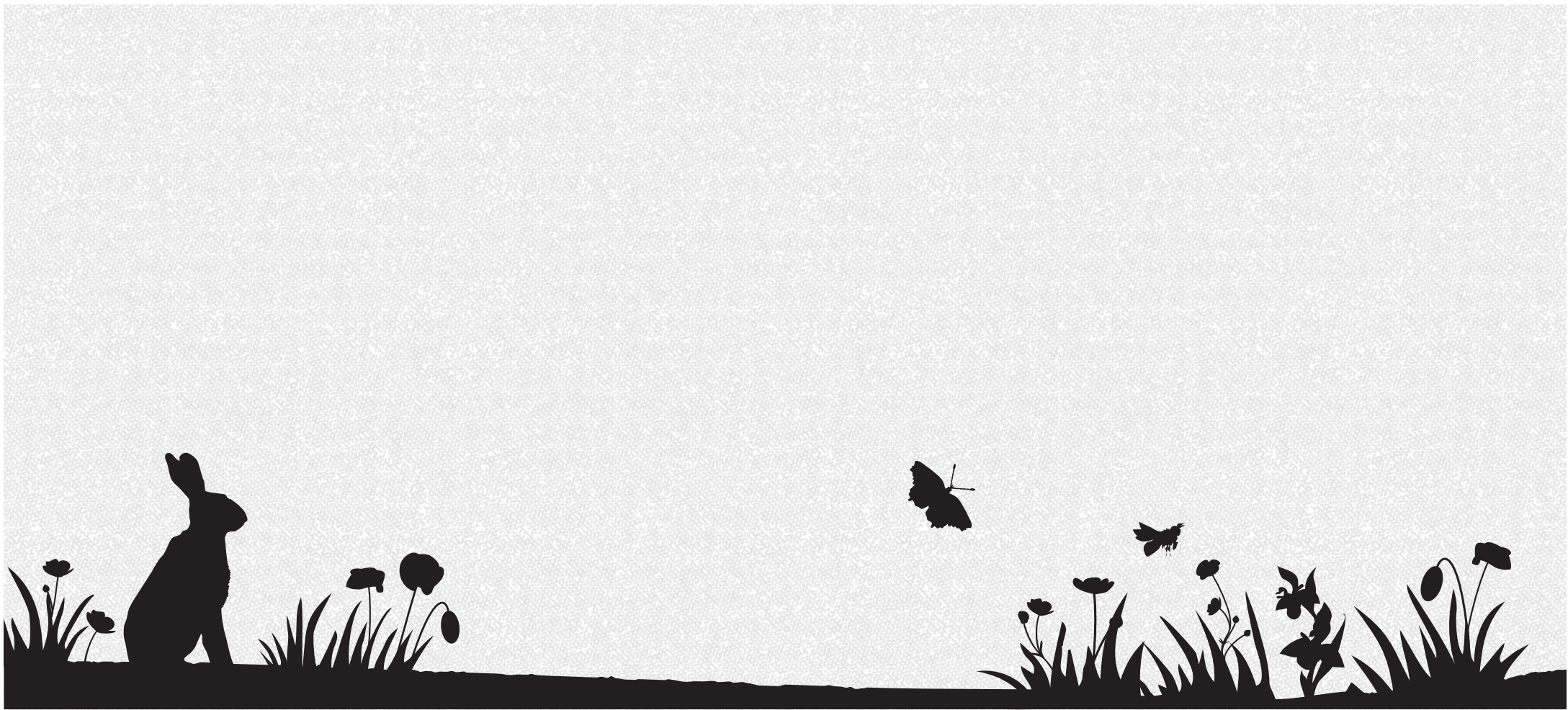
Allerthorpe Nature Reserve (4 miles) >



Cali Heath Nautre Reserve (5 miles) >



Askham Bog Nature Reserve (8 miles) >



About Us

What we do

Latest News

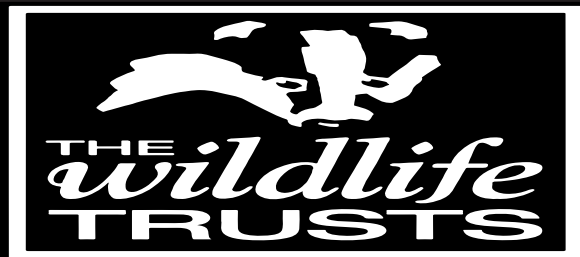
Support Us

Become a member

Donate

Keep in touch

Sign up to our e-newsletter



Yorkshire Wildlife Trust is registered in England no. 409650 and is a registered charity no. 210807. Registered Office: 1 St George's Place, York, YO24 1GN

[Accessibility](#) | [Privacy Policy](#) | [Cookies Policy](#)