



Spurn National Nature Reserve

Birdwatching

Geological interest

Getting away from it all

Historical interest

Overwintering birds

Big skies and ever changing wildlife make the evocative landscape of Spurn one of the Trust's most iconic nature

reserves. Whether you go by foot, bike or aboard a Spurn Safari (sorry – no vehicular access down to the Point) visiting is always an adventure.

Location

Spurn Head, south of Kilnsea

HU12 0UH

Hull

East Riding of Yorkshire

HU12 0UH

OS Map Reference

TA 419 149



Know before you go



Size

327 hectares

Entry fee

Free

Parking information

A dedicated pay and display car park is available on the approach road to the nature reserve, opposite the Spurn Discovery Centre. Parking is free for members of Yorkshire Wildlife Trust and residents. Please visit the Spurn Discovery Centre page to find.

Grazing animals

Hebridean sheep and longhorn cattle

Walking trails

Footpaths are open all the time (unless inclement weather closes the nature reserve).

Access

Please be aware of the following:

- **Tides:** Strong currents and soft sand underfoot mean that it is very dangerous to enter the water on the wash over area as the high tide comes in and recedes – please do not make any attempt to cross the sands until all the water has gone. Make sure you

get the most out of your day by checking the tide times (please see below) - and which are also on display at the [Spurn Discovery Centre](#)

- **Inclement weather** - for safety reasons the nature reserve may on occasion be closed to the public. Please check back here before you visit for the latest updates.
- **Brown tail moth caterpillar:** In the scrub around the base of the lighthouse, and along into Chalk Bank, you may notice what look like tents stretched between branches, which are in fact the overwintering silk tents of the brown tail moth caterpillar. Whilst for many these caterpillars are harmless, they can cause itchy allergic skin reactions or respiratory issues for those with asthma or hay fever - so please don't touch the caterpillars or the tents.

Limited accessibility for wheelchair users.



Dogs

No dogs permitted



Facilities

Visitor centre

Bird hides

Toilets
Shop
Cafe/refreshments
Picnic area
Disabled toilet
Baby changing facilities

When to visit

Opening times

Open at all times (unless inclement weather poses a risk to visitors).

Car park open dawn until dusk.

Spurn Discovery Centre open 9am - 5pm.

From Monday 16th July till Sunday 16th September, the Discovery Centre will be open from 9am - 6pm every day and the cafe open 10am-5pm everyday.

Best time to visit

March to November

Habitat

Coastal

Grassland

Marine

About



History



Spurn Lighthouse



Spurn Discovery Centre



Tide times

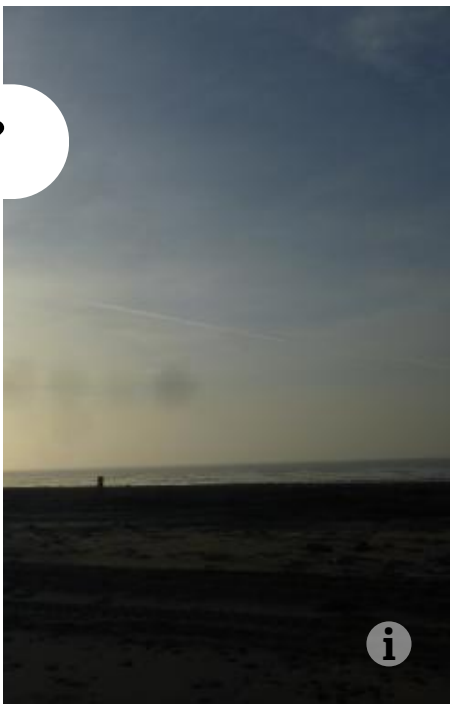


Seasonal highlights



Directions





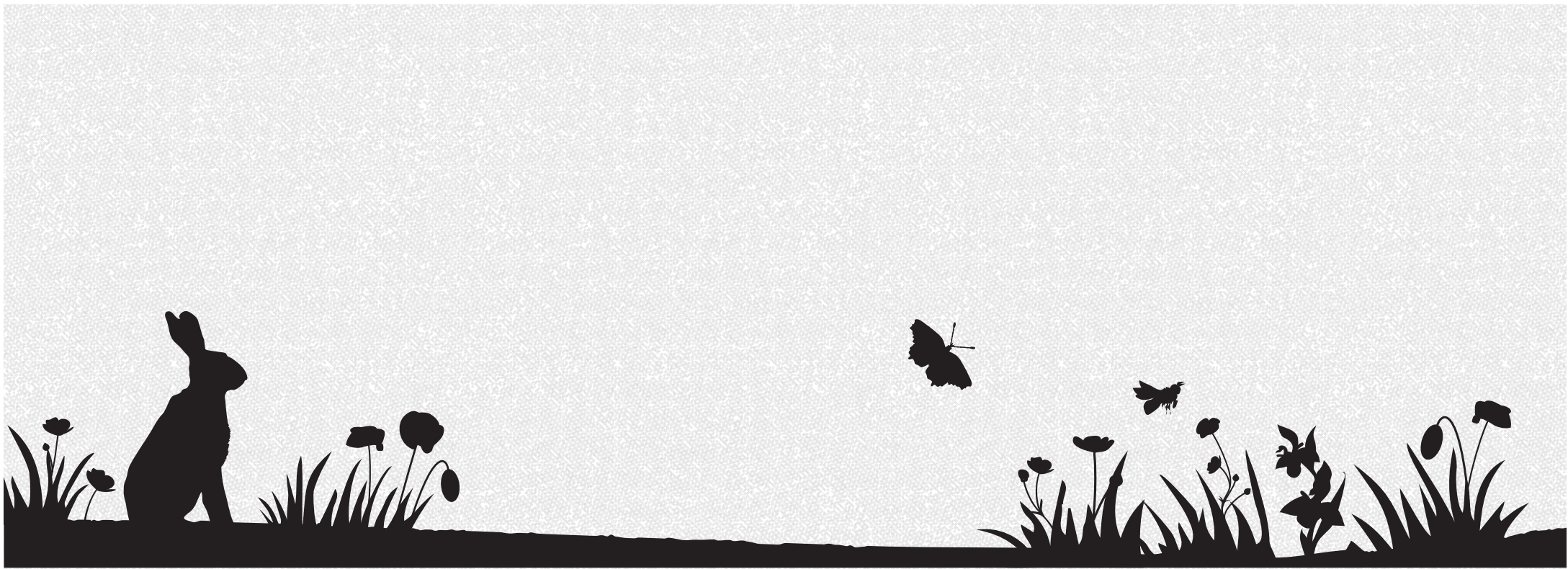
Kilnsea Wetlands Nature Reserve (1 miles) >



Hodgson's Fields Nature Reserve (5 miles) >



Welwick Saltmarsh Nature Reserve (6 miles) >



About Us

[What we do](#)

[Latest News](#)

Support Us

[Become a member](#)

[Donate](#)

Keep in touch

[Sign up to our e-newsletter](#)



Yorkshire Wildlife Trust is registered in England no. 409650 and is a registered charity no. 210807. Registered Office: 1 St George's Place, York, YO24 1GN

[Accessibility](#) | [Privacy Policy](#) | [Cookies Policy](#)