

About Us

- > [Governance](#)
- > [Investigators](#)
- > [Early Career Researchers](#)
- > **[Students](#)**
- > [Management Team](#)
- > [Stemformatics Platform](#)
- > [Annual Reports](#)
- > [Job Opportunities](#)
- > [Resource Library](#)


Want to keep up to date with the latest developments.

**STEMCELLS
NEWSLETTER**

Enter your email

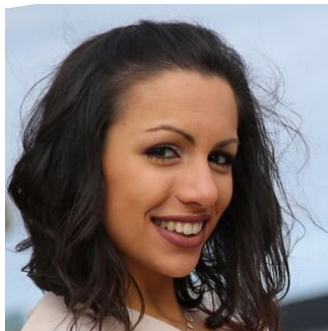
> [Signup Now](#)

[Home](#) > [About Us](#) > [Students](#) > Monica Nafria Fedi

> [Download a PDF copy of this content](#) 

MONICA NAFRIA FEDI

Blood development and Disease / Cancer Sciences [Professor Andrew Elefanty \(Melbourne, AUS\)](#) and [Professor Constanze Bonifer \(Birmingham, UK\)](#)



Monica graduated with a B.Sc in Genetics from the Universitat Autònoma de Barcelona (UAB, Spain) in 2014. Her first hands-on lab experience was during the final year of her undergraduate degree, studying alternative RNA splicing under the supervision of Dr Juan Valcarcel at the Centre for Genomic Regulation (CRG) department of the Barcelona Biomedical Research Park (PRBB). She received her MRes in Cellular and Molecular Biology from the University of Birmingham (UoB, UK) in 2015. During her master's degree, she studied (i) the gene B-Myb in induced Pluripotent Stem Cells and during somatic reprogramming, in the laboratory of Dr Paloma Garcia, and (ii) the role of BRD4 in regulating RUNX1-induced transcription during the endothelial-haematopoietic transition, in the laboratory of Prof Constanze Bonifer. Currently she is a joint PhD student between the University of Birmingham (UK) and the University of Melbourne (AUS), under the guidance of Prof Constanze Bonifer and in collaboration with Prof Andrew Elefanty (Murdoch Children's Research Institute, AUS). Her PhD research focuses in the study of t(8;21) Acute Myeloid Leukaemia through disease modelling in human Pluripotent Stem Cells using an in vitro system of haematopoietic differentiation.

Joint PhD student between University of Melbourne (AUS, at MCRI) and University of Birmingham (UK)

Contact student by monica.nafriaifedi@mcri.edu.au

- > Investigators
- > Early Career Researchers
- > Students
- > Management Team
- > Stemformatics Platform
- > Annual Reports
- > Job Opportunities
- > Resource Library
- > Regenerative Medicine
- > Disease Modelling
- > Designer Cells
- > Engagement, Ethics and Policy Program
- > Accelerated Research Program
- > Previous Research Programs
- > What Are Clinical Trials?
- > Stem Cell Clinical Trials
- > FAQ's
- > Terminology
- > Press Releases
- > What's On?

