

**Search Real Estate:**

Find condo or house  
 Property ID:    
**OR FAST SEARCH:**  
 Type:   
 Price:   
 Zone:   
 Economic First  
 Luxury First  
  
[Advanced search](#)

**Real Estate in Pattaya:**

- [New projects](#)
- [Best price condos](#)
- [Condos for sale](#)
- [Condos for rent](#)
- [Houses for sale](#)
- [Houses for rent](#)
- [Commercial property](#)
- [Property renovation](#)

**Deals of the week:**

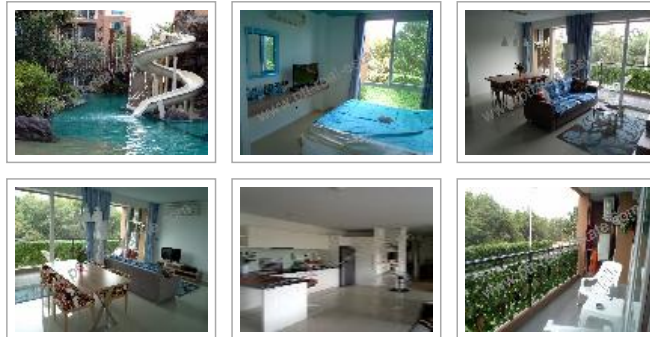
- [Condo Pattaya](#)
- [House Pattaya](#)
- [Business](#)

**Call us anytime:**

**Kim (English, Thai):**  
 +66 8 4866 5346  
 Skype: pttkim  
**Jack (Русский, English):**  
 +66 8 4449 1254  
 Skype: vei1971  
[pttrealestate@gmail.com](mailto:pttrealestate@gmail.com)

**Pattaya Real Estate: Condo. Property ID# 1774**

*Click an image to view big photo.*



<b>Condo - Jomtien</b>	Atlantis Resort Condominium
<b>Area, sq.m.:</b>	73
<b>Floor:</b>	2
<b>Bed(s):</b>	2
<b>Bath(s):</b>	2
<b>Furnished:</b>	Furnished
<b>Balcony size:</b>	Large balcony
<b>Seaview:</b>	No seaview
<b>Ownership:</b>	<b>Foreign Name</b>
<b>Property transfer fee:</b>	By buyer
<b>Sale price:</b>	3,650,000.00 THB

[Download this page as pdf.](#)

[Ask more about this property.](#) [Email this property to a friend.](#)

**Condo description.**

Atlantis Condo resort for sale. 2 bedroom, 2 bathroom, fully furnished and well finished with a European kitchen. There is a private balcony that has a nice garden view.

Atlantis Condo Resort is a resort-style condominium project just off of Jomtien Second Road near Soi Wat Boon.

Living up to its name, Atlantis features many water themes. The developer boasts that it has the largest swimming pool in the Pattaya - Jomtien area. Other water features include natural waterfalls, water slides into the pool and much more. The complex comprises 5 buildings containing a total of 1,000 35 square meter, one bedroom condos. Units can be combined to make larger units. Security gards, Communal Gardens, Parking, Communal Garden pool, Children's pool, Fitness center, Suana, CCTV camera, Children's playground and covered parking.

The condo is not far away from Jomtien beach. Only a short drive to restaurants, bars, local shops and services.

[Sign Up](#) to see what your friends recommend.



LINE Add friend

### Law service:

- Company
  - Taxes
  - Accounting
  - Audit
  - Licenses
  - Land office
  - Visas
  - Invitations
  - Work permit
  - Customs
  - Courts
- We solve all the issues**  
**+66 (0) 8 444 912 54**

### Subscribe for news:

Your email...

Subscribe...

We never send spam.

### Our social life:

- [RSS feed](#)
- [Facebook](#)
- [Twitter](#)
- [YouTube](#)



Bookmark with: [Facebook](#) [Twitter](#) [Digg](#) [Reddit](#) [Stumble](#) [Delicious](#)

[Pattaya: Wikipedia.](#)



**Tags:** [condo](#), [house](#), [villa](#), [commercial](#), [pattaya](#), [thailand](#), [ownership](#), [seaview](#)

[Buy condo in Pattaya](#), [rent condo in Pattaya](#) | [Site map](#) | [Terms of Use](#) | [Email to us](#) | [Cloud](#) | [XML](#) | [Login](#)

©2009-2019 Kim Property Real Estate Co. LTD, Pattaya, 245/122 Moo 9 Pattaya Klang Road, Nonprue Banglamung Chonburi 20150