

**Search Real Estate:**

Find condo or house  
 Property ID:    
**OR FAST SEARCH:**  
 Type:   
 Price:   
 Zone:   
 Sort:  Economic First  
 Luxury First  
  
[Advanced search](#)

**Real Estate in Pattaya:**

- [New projects](#)
- [Best price condos](#)
- [Condos for sale](#)
- [Condos for rent](#)
- [Houses for sale](#)
- [Houses for rent](#)
- [Commercial property](#)
- [Property renovation](#)

**Deals of the week:**

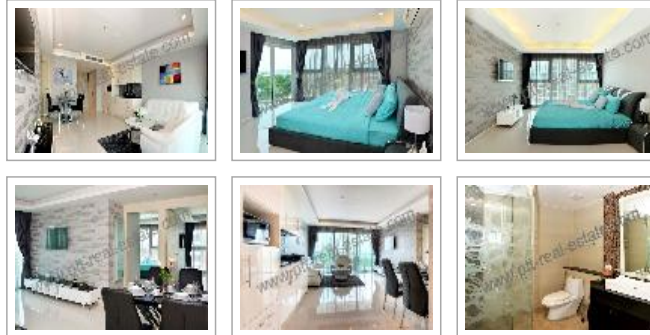
- [Condo Pattaya](#)
- [House Pattaya](#)
- [Business](#)

**Call us anytime:**

**Kim (English, Thai):**  
 +66 8 4866 5346  
 Skype: pttkim  
**Jack (Русский, English):**  
 +66 8 4449 1254  
 Skype: vei1971  
[pttrealestate@gmail.com](mailto:pttrealestate@gmail.com)

**Pattaya Real Estate: Condo. Property ID# 1780**

*Click an image to view big photo.*



<b>Condo - Pratumnak</b>	Cosy Beach View Condominium
<b>Area, sq.m.:</b>	95
<b>Floor:</b>	2
<b>Bed(s):</b>	2
<b>Bath(s):</b>	2
<b>Furnished:</b>	Furnished
<b>Balcony size:</b>	Large balcony
<b>Seaview:</b>	No seaview
<b>Ownership:</b>	<b>Thai name</b>
<b>Property transfer fee:</b>	By buyer
<b>Sale price:</b>	6,580,963.00 THB

[Download this page as pdf.](#)

[Ask more about this property.](#) [Email this property to a friend.](#)

**Condo description.**

Cosy Beach View is a new 24-storey condominium in Pattaya. The condominium is located on Pratumnak Hill at Cosy Beach, one of the most popular areas of the city. Only a few minutes away from Pattaya city. The developer of the project is David Marsiano, who have successfully completed two condominium complexes in Pattaya city - City Garden Pattaya and The Avenue Residence. The condominium is located 200 meters away from the beach and has sea view from any apartment from the fourth floor. Here at Cosy Beach View Condominium, we have 297 units and offer more than 20 different apartment types including various types of studios, 1 & 2 & 3 bedroom apartments, apartments with private garden, and of course a top-floor pent house. We have created something special for the residents of our condominium - Health & Leisure Club on the 14th floor with panoramic views of the city and sea. Anything you can dream of - Health & Leisure Club will include such facilities as an Outdoor Sports Complex Area, Spa Salon, Fitness Center & Gym, Games room, Swimming Pool, Restaurant and Cafes. Having a very flexible payment plan we can offer you best conditions.



### Law service:

- Company
  - Taxes
  - Accounting
  - Audit
  - Licenses
  - Land office
  - Visas
  - Invitations
  - Work permit
  - Customs
  - Courts
- We solve all the issues**  
**+66 (0) 8 444 912 54**

### Subscribe for news:

Your email...

Subscribe...

We never send spam.

### Our social life:

- [RSS feed](#)
- [Facebook](#)
- [Twitter](#)
- [YouTube](#)

### Common Facilities

24 hours security, CCTV, Underground Parking with CCTV, Keycard access, Lobby -Reception, 3 Elevators, Swimming pool with Sunbathing area, shallow children's pool, Garden, children's playground, Steam / Sauna, Hot & Cold Jacuzzi, Spa, Games room Clubhouse, Gymnasium and Fitness Center, Outdoor activities field, International Cuisine Restaurant, The Chic Garden Lounge/ Bar.

Term of payments.

Booking Fee: 20,000 Baht

Signing Contract Fee 20% of the unit price within 14 days

Monthly payments 10% during 10 month by 1% every month

Balance 70% of the unit price on transfer of ownership

Price does not Include

Sinking fund: 600 Baht/sqm. One time payment;

Maintenance Fees: Fees: 50 Baht/sqm. Per month

Installation for electricity and water meter at 9,600 THB paid by purchaser;

Transfer Fee: paid by purchaser.

[Recommend](#) [Sign Up](#) to see what your friends recommend.



Bookmark with: [Facebook](#) [Twitter](#) [Digg](#) [Reddit](#) [Stumble](#) [Delicious](#)

[Pattaya: Wikipedia.](#)



**Tags:** [condo](#), [house](#), [villa](#), [commercial](#), [pattaya](#), [thailand](#), [ownership](#), [seaview](#)

[Buy condo in Pattaya](#), [rent condo in Pattaya](#) | [Site map](#) | [Terms of Use](#) | [Email to us](#) | [Cloud](#) | [XML](#) | [Login](#)

©2009-2019 Kim Property Real Estate Co. LTD, Pattaya, 245/122 Moo 9 Pattaya Klang Road, Nonqprue Banglamung Chonburi 20150