

Search Real Estate:

Find condo or house
 Property ID:
OR FAST SEARCH:
 Type:
 Price:
 Zone:
 Sort: Economic First
 Luxury First

[Advanced search](#)

Real Estate in Pattaya:

- [New projects](#)
- [Best price condos](#)
- [Condos for sale](#)
- [Condos for rent](#)
- [Houses for sale](#)
- [Houses for rent](#)
- [Commercial property](#)
- [Property renovation](#)

Deals of the week:

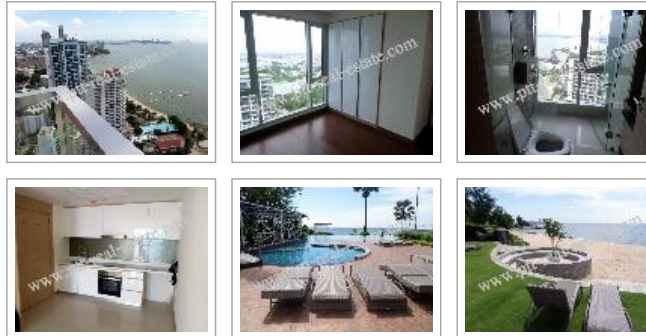
- [Condo Pattaya](#)
- [House Pattaya](#)
- [Business](#)

Call us anytime:

Kim (English, Thai):
 +66 8 4866 5346
 Skype: pttkim
Jack (Русский, English):
 +66 8 4449 1254
 Skype: vei1971
pttrealestate@gmail.com

Pattaya Real Estate: Condo. Property ID# 1804

Click an image to view big photo.



Condo - Naklua	The Palm Wong Amat Beach
Area, sq.m.:	72
Floor:	37
Bed(s):	2
Bath(s):	2
Furnished:	Partially furnished
Balcony size:	Large balcony
Seaview:	Seaview
Ownership:	Foreign Name
Property transfer fee:	50/50 split
Sale price:	9,800,000.00 THB

[Download this page as pdf.](#)

[Ask more about this property.](#) [Email this property to a friend.](#)

Condo description.

The Palm Wong Amat Beach is a 5 star luxury beachfront condo. This brand-new condo is simply paradise on earth. Located on a private beach of Wongamat area in Pattaya with world-class facility - Large swimming pool with jacuzzi, pool table, table tennis and fitness center. A minimart is conveniently located right in front of the condo. 2 bedroom, 2 bathroom, Large balcony with panoramic sea view also sea view from bedroom and bathroom. Built in furnished, European Kitchen, Built-in Wardrobe.
 20 Min drive to Laemchabang
 10 Min drive to South Pattaya
 50 Min drive to Rayong

3 people recommend this. [Sign Up](#) to see what your friends recommend.



Law service:

- Company
- Taxes
- Accounting
- Audit
- Licenses
- Land office
- Visas
- Invitations
- Work permit
- Customs
- Courts

We solve all the issues
+66 (0) 8 444 912 54

Subscribe for news:

We never send spam.

Our social life:

- [RSS feed](#)
- [Facebook](#)
- [Twitter](#)
- [YouTube](#)



Bookmark with: [Facebook](#) [Twitter](#) [Digg](#) [Reddit](#) [Stumble](#) [Delicious](#)

[Pattaya: Wikipedia.](#)



Tags: [condo](#), [house](#), [villa](#), [commercial](#), [pattaya](#), [thailand](#), [ownership](#), [seaview](#)

[Buy condo in Pattaya](#), [rent condo in Pattaya](#) | [Site map](#) | [Terms of Use](#) | [Email to us](#) | [Cloud](#) | [XML](#) | [Login](#)

©2009-2020 Kim Property Real Estate Co. LTD, Pattaya, 245/122 Moo 9 Pattaya Klang Road, Nonprue Banglamung Chonburi 20150