

**Search Real Estate:**

Find condo or house  
 Property ID:    
**OR FAST SEARCH:**  
 Type:   
 Price:   
 Zone:   
 Sort:  Economic First  
 Luxury First  
  
[Advanced search](#)

**Real Estate in Pattaya:**

- [New projects](#)
- [Best price condos](#)
- [Condos for sale](#)
- [Condos for rent](#)
- [Houses for sale](#)
- [Houses for rent](#)
- [Commercial property](#)
- [Property renovation](#)

**Deals of the week:**

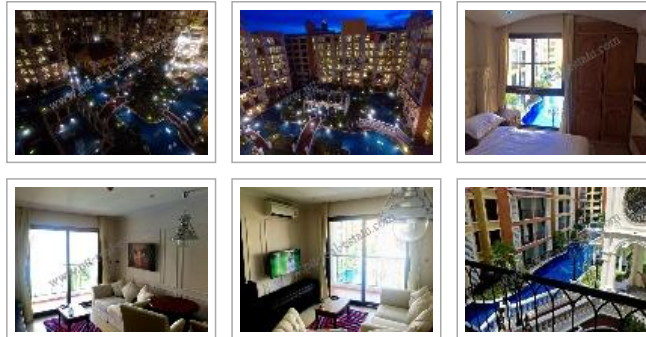
- [Condo Pattaya](#)
- [House Pattaya](#)
- [Business](#)

**Call us anytime:**

**Kim (English, Thai):**  
 +66 8 4866 5346  
 Skype: pttkim  
**Jack (Русский, English):**  
 +66 8 4449 1254  
 Skype: vei1971  
[pttrealestate@gmail.com](mailto:pttrealestate@gmail.com)

**Pattaya Real Estate: Condo. Property ID# 1809**

*Click an image to view big photo.*



<b>Condo - Najomtien</b>	VENETIAN SIGNATURE CONDO
<b>Area, sq.m.:</b>	32
<b>Floor:</b>	4
<b>Bed(s):</b>	1
<b>Bath(s):</b>	1
<b>Furnished:</b>	Furnished
<b>Balcony size:</b>	Medium balcony
<b>Seaview:</b>	No seaview
<b>Ownership:</b>	<b>Foreign Name</b>
<b>Property transfer fee:</b>	50/50 split
<b>Sale price:</b>	2,400,000.00 THB

[Download this page as pdf.](#)

[Ask more about this property.](#) [Email this property to a friend.](#)

**Condo description.**

The Venetian Signature Condo Resort Pattaya is a planned resort style project in Jomtien, with approximately 990 condos in 4 residential buildings. Every building is surrounded by the canals of Venice. Rooms are offered in different sizes and floor plans, all are sold fully furnished. All units are fully fitted to a high quality standard, giving buyers increased value for their money. The development is close to local shops and services and is within walking distance to the beach. It is also located on taxi routes to and from Pattaya and Jomtien.

This is a 1 bedroom/ 1 bathroom with fully furnished, Pool view

- Security Guards
- Communal gardens
- Parking
- Communal swimming pool
- Quiet location
- Fitness Center



LINE Add friend

### Law service:

- Company
  - Taxes
  - Accounting
  - Audit
  - Licenses
  - Land office
  - Visas
  - Invitations
  - Work permit
  - Customs
  - Courts
- We solve all the issues**  
**+66 (0) 8 444 912 54**

### Subscribe for news:

Your email...

Subscribe...

We never send spam.

### Our social life:

- [RSS feed](#)
- [Facebook](#)
- [Twitter](#)
- [YouTube](#)

CCTV Camera  
 Covered Parking  
 Water Features

[Recommend](#) Sign Up to see what your friends recommend.



**Bookmark with:** [Facebook](#) [Twitter](#) [Digg](#) [Reddit](#) [Stumble](#) [Delicious](#)

[Pattaya: Wikipedia.](#)



**Tags:** [condo](#), [house](#), [villa](#), [commercial](#), [pattaya](#), [thailand](#), [ownership](#), [seaview](#)

[Buy condo in Pattaya](#), [rent condo in Pattaya](#) | [Site map](#) | [Terms of Use](#) | [Email to us](#) | [Cloud](#) | [XML](#) | [Login](#)

©2009-2019 Kim Property Real Estate Co. LTD, Pattaya, 245/122 Moo 9 Pattaya Klang Road, Nonprue Banglamung Chonburi 20150