

Search Real Estate:

Find condo or house
 Property ID:

OR FAST SEARCH:

Type: ▼
 Price: ▼
 Zone: ▼

Sort: Economic First
 Luxury First

[Advanced search](#)

Real Estate in Pattaya:

- [New projects](#)
- [Best price condos](#)
- [Condos for sale](#)
- [Condos for rent](#)
- [Houses for sale](#)
- [Houses for rent](#)
- [Commercial property](#)
- [Property renovation](#)

Deals of the week:

- [Condo Pattaya](#)
- [House Pattaya](#)
- [Business](#)

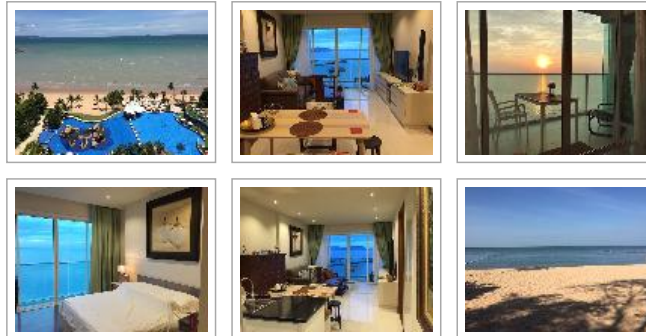
Call us anytime:

Kim (English, Thai):
 +66 8 4866 5346
 Skype: pttkim

Jack (Русский, English):
 +66 8 4449 1254
 Skype: vei1971
pttrealestate@gmail.com

Pattaya Real Estate: Condo. Property ID# 1816

Click an image to view big photo.



Condo - Najomtien	Movenpick residences
Area, sq.m.:	83
Floor:	10
Bed(s):	1
Bath(s):	1
Furnished:	Furnished
Balcony size:	Large balcony
Seaview:	Seaview
Ownership:	Foreign Name
Property transfer fee:	50/50 split
Sale price:	11,500,000.00 THB

[Download this page as pdf.](#)

[Ask more about this property.](#) [Email this property to a friend.](#)

Condo description.

Movenpick residences 1 bedroom condo for sale. Fully furnished - built in cupboards, kitchen, king size bed, fridge, washing machine, curtains, large TV, balcony furniture, dining table. Excellent location and facilities.

Reason for sale - relocation in 2019.

One person recommends this. [Sign Up](#) to see what your friends recommend.



LINE Add friend

Law service:

- Company
- Taxes
- Accounting
- Audit
- Licenses
- Land office
- Visas
- Invitations
- Work permit
- Customs
- Courts

We solve all the issues
+66 (0) 8 444 912 54

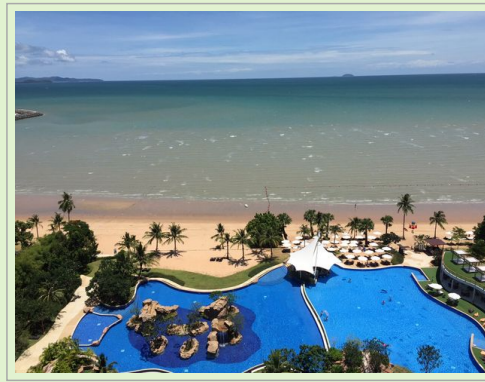
Subscribe for news:

Subscribe...

We never send spam.

Our social life:

- [RSS feed](#)
- [Facebook](#)
- [Twitter](#)
- [YouTube](#)



Bookmark with: [Facebook](#) [Twitter](#) [Digg](#) [Reddit](#) [Stumble](#) [Delicious](#)

[Pattaya: Wikipedia.](#)



Tags: [condo](#), [house](#), [villa](#), [commercial](#), [pattaya](#), [thailand](#), [ownership](#), [seaview](#)

[Buy condo in Pattaya](#), [rent condo in Pattaya](#) | [Site map](#) | [Terms of Use](#) | [Email to us](#) | [Cloud](#) | [XML](#) | [Login](#)

©2009-2019 Kim Property Real Estate Co. LTD, Pattaya, 245/122 Moo 9 Pattaya Klang Road, Nonprue Banglamung Chonburi 20150