

# Espace Faune de la Forêt d'Orient



Sites à découvrir / à visiter > Les sites Valeurs Parc

Entre Mesnil-St-Père et la Maison du Parc

Latitude: 48.277345

Longitude: 4.370048

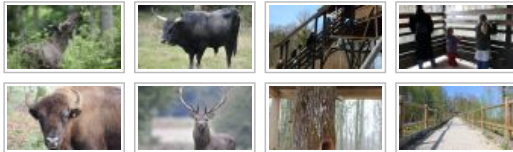
Google Streetview

## Presentation

Situated on a 89 ha peninsula of the Lac d'Orient, between Mesnil-St-Père and the Maison du Parc, a special place allowing the discovery of mammals populating the forests of yesterday and today.

With a little patience and keeping as quiet as possible discover, from three observatories on the edge of the woods deer, roe deer and wild boar as well as tarpan, auroch and elk. Living in semi-captivity in their natural milieu, the animals are more easily seen at the end of the day.

It's in three refurbished enclosures, that three new species have come to join the deer, roe deer and wild boar...like in former times...



The Auroch, today bred back by crossing successive breeds of cattle that had conserved their morphological characteristics,

The Tarpan, close relative of the Konik Polski, another herbivore that once populated the European steppes, The European Elk still present in Northern Europe and America.

The Espace Faune de la Forêt d'Orient presents to the public « grazing animals » in semi-captivity, from yesterday and today, without forgetting the local flora and fauna, such as the little creatures of the ponds, the winged multitude of the nature reserve, the trees of our forests... In brief, a real Noah's Ark in the heart of the Park ...

L'Espace Faune is adapted for partially sighted people and non ambulant people labelled Tourisme & Handicap.

[Visit the Espace Faune in photos.](#)

### Group reservations

For schools and leisure centres that want the offer of nature discovery with accommodation call the Centre d'Etude et de Pédagogie à l'Environnement, Ligue de l'Enseignement au 03 25 41 28 63 [cym@lajigue10.org](mailto:cym@lajigue10.org)

For other groups, or for further information on the opening hours, contact the Intercommunal Tourist Office : 03 25 43 38 88 or [info@pnrfo.org](mailto:info@pnrfo.org)

## Prices and schedules

Visit without guide :

Adults and children aged over 13 : 7€

Children 3-12 : 5€

Children under 3 : free

Special price (medical centre, specialised institutes) : 4€

Annual subscription (for the season 2012), unlimited visits without a guide :

Adults : 30€

Children 3-12 : 20€  
Children under 3 : free

Guided tours (about 1 1/2 hours) by reservation :  
Adults min 10 people : 10 €/ per person  
Schools, leisure centres(1 adult free / 10 children ) : 6€/ per child  
Medical centre, specialised institutes (1 adult free / 4 people) : 6€/per person

Reception of individuals and families is possible :  
- April - 30th September every day except Friday, 2 00-8 00 closure of the ticket office 7 00.  
- 1st- 31st October every Sunday from 2 00-6 00 .  
- From 1st November groups are welcome every day of the week throughout the year  
except Saturdays and Sundays.  
- Closure of the Espace Faune 21st December -7th January 2013 for group visits.

## Coordinates

Espace Faune de la Forêt d'Orient

**Tel** 03 25 43 38 88

Entre Mesnil-St-Père et la Maison du  
Parc

**Fax** 03 25 41 54 09

**Mail** [info@pnrfo.org](mailto:info@pnrfo.org)

**Web** [www.pnr-foret-orient.fr](http://www.pnr-foret-orient.fr)

